



TRANSPORTATION CABINET

Frankfort, Kentucky 40622
www.transportation.ky.gov/

Steven L. Beshear
Governor

Michael W. Hancock, P.E.
Secretary

November 17, 2015

CALL NO. 302
CONTRACT ID NO. 151280
ADDENDUM # 3

Subject: Knox County, FD39 061 1487 000-001
Letting November 20, 2015

- (1) Revised - Plan Sheets - R2E, R10, & R37
- (2) Revised - Bid Items - Pages 139-142 of 142

Proposal revisions are available at <http://transportation.ky.gov/Construction-Procurement/>.

Plan revisions are available at <http://www.lynnimaging.com/kytransportation/>.

If you have any questions, please contact us at 502-564-3500.

Sincerely,

A handwritten signature in cursive script that reads "Rachel Mills".

Rachel Mills, P.E.
Director
Division of Construction Procurement

RM:ks
Enclosures



An Equal Opportunity Employer M/F/D

STORM SEWER SUMMARY

Pipe Sheet No.	STATION	OFFSET	STRUCTURE NO.	ALTERNATE PLAN STRUCTURE ID	DESIGN Ph LEVEL	COVER HEIGHT	FLOWABLE FILL REQUIRED	STORM SEWER						PIPE CULVERT HEADWALL-36 IN	CURBED BOX INLET TYPE "A"	DROP BOX INLET TYPE 13G	DROP BOX INLET TYPE 14	JUNCTION BOX-24 IN	JUNCTION BOX-30 IN	JUNCTION BOX-36 IN	JUNCTION BOX-48 IN	CHANNEL LINING CLAS III	PVC PIPE-6 IN	REMARKS				
								15 INCH	18 INCH	24 INCH	27 INCH	30 INCH	36 INCH															
Item Code								00521	00522	00524	00525	00526	00528	01212	01456	01559	01577	01643	01644	01645	01647	02484	03385					
Unit to Bid								FT	Y	O	R	N	LF	LF	LF	LF	LF	LF	EACH	EACH	EACH	EACH	EACH	EACH	EACH	TON	LF	
R27	3+69.51	24' RT	IN114	1	M	3.2	Y			39.22																	SAG CONDITION	
R27	3+81.75	11.89 LT	IN115	2	M	4.3	N			214.12																	SAG CONDITION	
R27, R35	6+00.00	12' LT	IN116	3	M	5.1	N					102.86																
R27	7+05.86	12' LT	IN117	4	M	5.0	N					91.14																
R28, R36	8+00.00	12' LT	IN118	5	M	4.8	N					197.00																
R28	10+00.00	12' LT	IN119	14	M	3.9	N					97.02																
R28, R30, R32, R38	11+00.00	12' LT	IN120	15	M	5.4	N					77.56																
R28	3+12.50	62.32' RT	KY 6 G1	A	M	3.0	Y			43.89					1												GRADE CONDITION	
R28	3+16.35	17.48' RT	MH2	B	M	3.3	Y			5.00									1								JUNCTION BOX TYPE "B"	
R29	4+43.99	81.83' RT	IN103	6	M	3.0	Y			35.34																	SAG CONDITION	
R29	4+77.97	80.84' RT	IN104	7	M	3.8	N			130.00																	SAG CONDITION	
R29	6+00.00	24' RT	IN105	8	M	4.7	N			104.91																		
R29, R30	7+07.91	24' RT	IN107	11	M	3.8	N					89.09																
R29	8+00.00	24' RT	IN108	12	M	3.7	N					149.87																
R30	9+52.85	24' RT	IN112	21	M	5.0	N					41.26																
R30, R31	9+97.11	25.86' RT	MH1	23	M	4.8	N					68.57								1							JUNCTION BOX TYPE "A"	
R30	10+68.68	24' RT	IN1	24	M	4.8	N					28.86																
R30	11+00.54	24' RT	IN113	25	M	4.7	N					37.34															SAG CONDITION	
R30	6+81.01	36.74' RT	IN106	9	M	3.6	N			24.42																		
R30	7+07.92	35.06' RT	MH7	10	M	4.3	N			6.90																		
R31	8+78.20	36.70' RT	IN109	13	M	3.0	N			115.94										1							JUNCTION BOX TYPE "A"	
R31	9+97.09	36.67' RT	IN111	22	M	5.8	N					6.15																
R31	10+88.99	138.69' RT	IN110	26	M	2.8	N			138.30																	SAG CONDITION	
R31	11+55.73	21.96' LT	MH3	O	M	3.0	N																		24.60		JUNCTION BOX TYPE "A"	
R31, R32	11+82.39	12' LT	IN121	16	M	5.6	N					62.24																
R32	12+50.00	12' LT	IN122	17	M	5.8	N					49.53																
R32	13+04.42	12.03' LT	IN123	18	M	5.9	N					46.73																
R32	13+55.95	12.03' LT	IN124	19	M	5.8	N																					
R32	14+13.72	12.02' LT	IN125	20	M	6.0	N					52.72																
R32	15+17.41	12' LT	IN126	27	M	6.2	N																					
R33	16+30.69	12' LT	IN127	28	M	6.0	N																					
R33	17+69.91	12' LT	IN128	29	M	6.2	N																					
R33	19+68.65	12' LT	IN129	30	M	5.3	N																					
R34, R35, R36	19+68.82	19.78' RT	MH8	34	M	6.0	N						30.45														JUNCTION BOX TYPE "A"	
R34	16+00.00	24' RT	IN130	31	M	5.2	N			97.00																		
R34	17+00.00	24' RT	IN131	32	M	5.1	N			149.74																		
R35	18+52.71	21.07' RT	IN132	33	M	5.1	N					112.68																
R35, R36, R37	20+18.10	16.34' RT	IN136	35	M	3.0	N						367.26	1	1												OUTLET	
R35	6+00.00	28.82' LT	LAWN CONNECTION	F	M	2.4	N			12.66																	JUNCTION BOX TYPE "A"	
R35	5+05.00	27.46' LT	LAWN DRAIN1	C	M	1.3	N			19.34																		
R35	5+26.00	27.67' LT	LAWN DRAIN2	D	M	1.3	N			32.34																		
R35	5+60.00	27.52' LT	LAWN DRAIN3	E	M	1.5	N			38.20																		
R35	6+20.00	29.51' LT	LAWN DRAIN4	G	M	1.3	N			18.15																		
R36	22+07.92	10' LT	IN133	38	M	2.9	Y			21.37																		
R36	22+09.00	10' RT	IN134	37	M	3.6	N					86.03																
R36	21+20.04	13.43' RT	IN135	36	M	5.1	N					98.53																
R36	7+42.50	26.82' LT	LAWN DRAIN5	H	M	1.3	N			55.84																		
R36	8+00.00	26.49' LT	LAWN DRAIN6	I	M	2.9	N			10.50																		
R36	8+80.00	26.72' LT	LAWN DRAIN7	J	M	1.3	N			78.36																		
R38	9+50.00	26' LT	LAWN DRAIN8	K	M	1.2	N			67.53																		
R38	10+19.36	25.34' LT	LAWN DRAIN9	L	M	1.5	N			78.81																		
R38	11+00.00	25.28' LT	LAWN CONNECTION2	M	M	1.9	N			8.87																	JUNCTION BOX TYPE "A"	
R38	11+08.62	26.28' LT	LAWN DRAIN10	N	M	1.3	N			6.79																		

FILE NAME: G:\PWORK\VERIKA_HUBBARD\0981022\PO020ESU.DGN
 USER: erika.smith
 DATE PLOTTED: August 11, 2015
 E-SHEET NAME:
 MicroStation v8.11.7.443

PROJECT TOTALS

960 897 1139 260 331 443 1 35 1 10 4 1 1 1 27.40 25

KY 1487 MANCHESTER STREET
 STORM SEWER SUMMARY

STORM SEWER SUMMARY

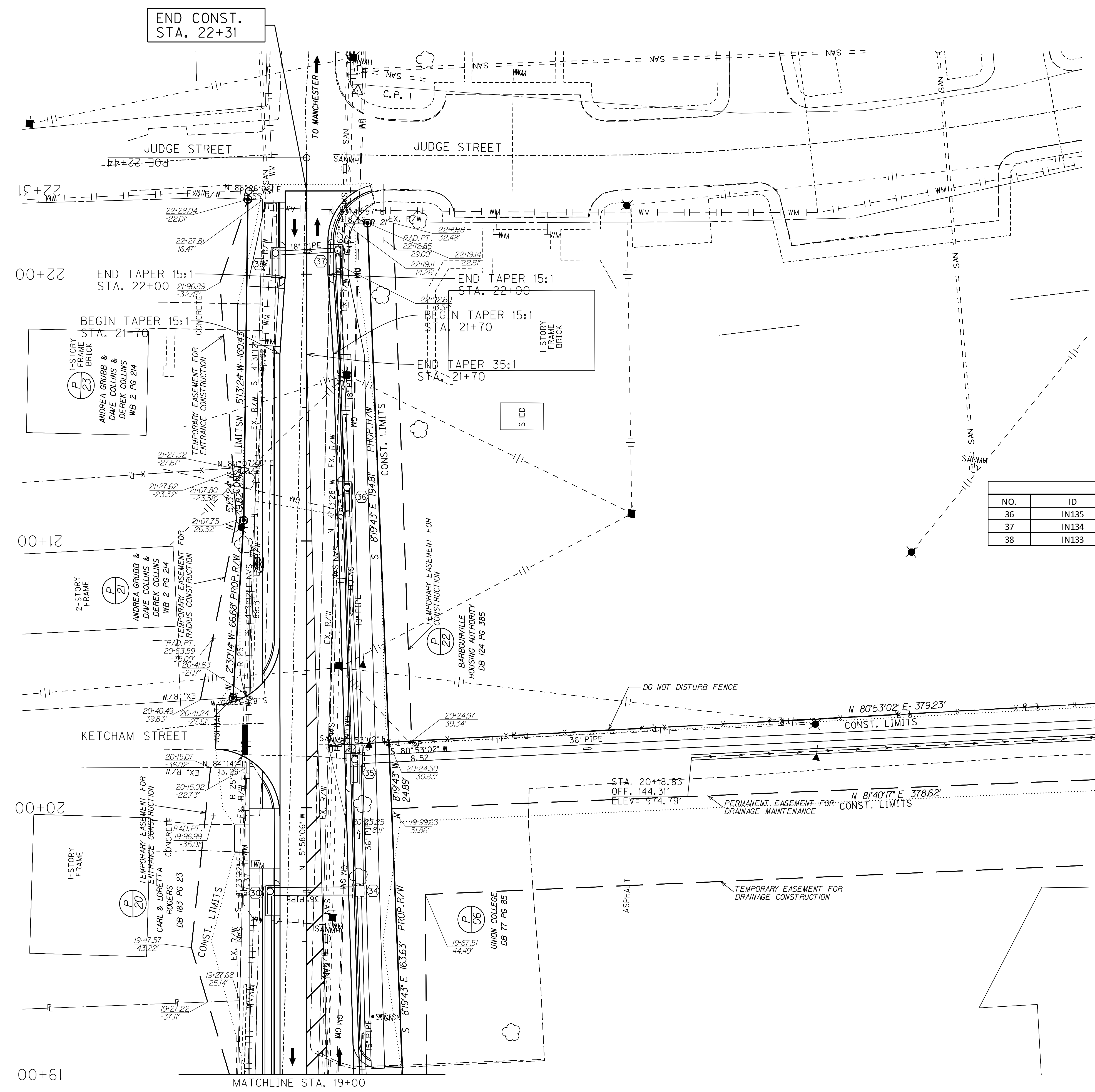
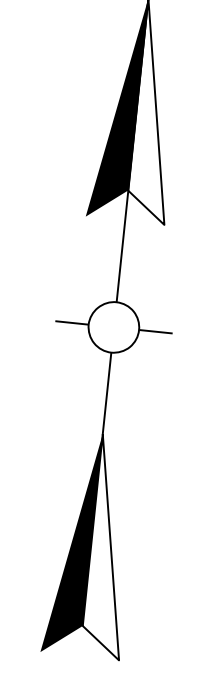
Pipe Sheet No.	STATION	OFFSET	STRUCTURE NO.	ALTERNATE PLAN STRUCTURE ID	DESIGN Ph LEVEL	COVER HEIGHT	FLOWABLE FILL REQUIRED	STORM SEWER						PIPE CULVERT HEADWALL-36 IN	CURBED BOX INLET TYPE "A"	DROP BOX INLET TYPE 13G	DROP BOX INLET TYPE 14	JUNCTION BOX-24 IN	JUNCTION BOX-30 IN	JUNCTION BOX-36 IN	JUNCTION BOX-48 IN	CHANNEL LINING CLAS III	PVC PIPE-6 IN	REMARKS	
								15 INCH	18 INCH	24 INCH	27 INCH	30 INCH	36 INCH												
								00521	00522	00524	00525	00526	00528												01212
Item Code								LF	LF	LF	LF	LF	LF	EACH	EACH	EACH	EACH	EACH	EACH	EACH	EACH	TON	LF		
Unit to Bid								FT	Y	OR	N														
R27	3+69.51	24' RT	IN114	1	M	3.2	Y		39.22					1										SAG CONDITION	
R27	3+81.75	11.89 LT	IN115	2	M	4.3	N		214.12					1									SAG CONDITION		
R27, R35	6+00.00	12' LT	IN116	3	M	5.1	N			102.86				1											
R27	7+05.86	12' LT	IN117	4	M	5.0	N			91.14				1											
R28, R36	8+00.00	12' LT	IN118	5	M	4.8	N			197.00				1											
R28	10+00.00	12' LT	IN119	14	M	3.9	N			97.02				1											
R28, R30, R32, R38	11+00.00	12' LT	IN120	15	M	5.4	N			77.56				1											
R28	3+12.50	62.32' RT	KY 6 G1	A	M	3.0	Y		43.89						1									GRADE CONDITION	
R28	3+16.35	17.48' RT	MH2	B	M	3.3	Y		5.00								1							JUNCTION BOX TYPE "B"	
R29	4+43.99	81.83' RT	IN103	6	M	3.0	Y		35.34					1										SAG CONDITION	
R29	4+77.97	80.84' RT	IN104	7	M	3.8	N		130.00					1										SAG CONDITION	
R29	6+00.00	24' RT	IN105	8	M	4.7	N		104.91					1											
R29, R30	7+07.91	24' RT	IN107	11	M	3.8	N			89.09				1											
R29	8+00.00	24' RT	IN108	12	M	3.7	N			149.87				1											
R30	9+52.85	24' RT	IN112	21	M	5.0	N			41.26				1											
R30, R31	9+97.11	25.86' RT	MH1	23	M	4.8	N			68.57							1							JUNCTION BOX TYPE "A"	
R30	10+68.68	24' RT	IN1	24	M	4.8	N			28.86				1											
R30	11+00.54	24' RT	IN113	25	M	4.7	N			37.34				1										SAG CONDITION	
R30	6+81.01	36.74' RT	IN106	9	M	3.6	N	24.42						1											
R30	7+07.92	35.06' RT	MH7	10	M	4.3	N	6.90									1							JUNCTION BOX TYPE "A"	
R31	8+78.20	36.70' RT	IN109	13	M	3.0	N	115.94						1											
R31	9+97.09	36.67' RT	IN111	22	M	5.8	N		6.15					1											
R31	10+88.99	138.69' RT	IN110	26	M	2.8	N	138.30						1										SAG CONDITION	
R31	11+55.73	21.96' LT	MH3	O	M	3.0	N										1					24.60		JUNCTION BOX TYPE "A"	
R31, R32	11+82.39	12' LT	IN121	16	M	5.6	N			62.24				1											
R32	12+50.00	12' LT	IN122	17	M	5.8	N			49.53				1											
R32	13+04.42	12.03' LT	IN123	18	M	5.9	N			46.73				1											
R32	13+55.95	12.03' LT	IN124	19	M	5.8	N				52.72			1											
R32	14+13.72	12.02' LT	IN125	20	M	6.0	N				97.42			1											
R32	15+17.41	12' LT	IN126	27	M	6.2	N				110.28			1											
R33	16+30.69	12' LT	IN127	28	M	6.0	N					135.96		1											
R33	17+69.91	12' LT	IN128	29	M	6.2	N			195.25				1											
R33	19+68.65	12' LT	IN129	30	M	5.3	N				30.45			1											
R34, R35, R36	19+68.82	19.78' RT	MH8	34	M	6.0	N			45.29									1					JUNCTION BOX TYPE "A"	
R34	16+00.00	24' RT	IN130	31	M	5.2	N	97.00						1											
R34	17+00.00	24' RT	IN131	32	M	5.1	N	149.74						1											
R35	18+52.71	21.07' RT	IN132	33	M	5.1	N		112.68					1											
R35, R36, R37	20+18.10	16.34' RT	IN136	35	M	3.0	N				367.26	1	1										27.4	OUTLET	
R35	6+00.00	28.82' LT	LAWN CONNECTION	F	M	2.4	N	12.66								1								JUNCTION BOX TYPE "A"	
R35	5+05.00	27.46' LT	LAWN DRAIN1	C	M	1.3	N	19.34								1									
R35	5+26.00	27.67' LT	LAWN DRAIN2	D	M	1.3	N	32.34								1									
R35	5+60.00	27.52' LT	LAWN DRAIN3	E	M	1.5	N	38.20								1									
R35	6+20.00	29.51' LT	LAWN DRAIN4	G	M	1.3	N	18.15								1									
R36	22+07.92	10' LT	IN133	38	M	2.9	Y		21.37					1											
R36	22+09.00	10' RT	IN134	37	M	3.6	N		86.03					1											
R36	21+20.04	13.43' RT	IN135	36	M	5.1	N		98.53					1											
R36	7+42.50	26.82' LT	LAWN DRAIN5	H	M	1.3	N	55.84								1									
R36	8+00.00	26.49' LT	LAWN DRAIN6	I	M	2.9	N	10.50								1									
R36	8+80.00	26.72' LT	LAWN DRAIN7	J	M	1.3	N	78.36								1									
R38	9+50.00	26' LT	LAWN DRAIN8	K	M	1.2	N	67.53								1									
R38	10+19.36	25.34' LT	LAWN DRAIN9	L	M	1.5	N	78.81								1									
R38	11+00.00	25.28' LT	LAWN CONNECTION2	M	M	1.9	N	8.87									1							JUNCTION BOX TYPE "A"	
R38	11+08.62	26.28' LT	LAWN DRAIN10	N	M	1.3	N	6.79								1									

PROJECT TOTALS

960 897 1139 260 331 443 1 35 1 10 4 1 1 1 27.40 25

KY 1487 MANCHESTER STREET
STORM SEWER SUMMARY

FILE NAME: G:\PWORK\VERIKA_HUBBARD\0981022\PO020ESU.DGN
USER: erika.smith
DATE PLOTTED: August 11, 2015
E-SHEET NAME:
MicroStation v8.11.7.443



CONST. 4" CONCRETE SIDEWALK & SOD						
LT. OR RT.	STATION - STATION	SQ. YD.	RAMP TYPE #1	RAMP TYPE #4	DETECTABLE WARNING (SQ. FT.)	SOD (SQ. YD.)
LT.	21+00 - 22+27.0	70.2	1	----	10	31.1
RT.	21+00 - 22+30.7	78	----	1	10	27.8

CONST. STANDARD CURB & GUTTER			
LT. OR RT.	STATION - STATION	L.F.*	
LT.	21+00 - 22+27.0	93.9	
RT.	21+00 - 22+31.3	115.5	

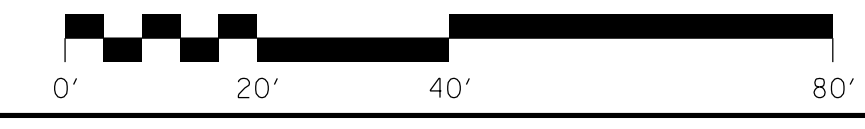
*NOTE: EXCLUDES CURB BOX INLETS AND ENTRANCES

ENTRANCE CHART					
LT. OR RT.	STA.	WIDTH (FT.)	AREA (SQ. YD.)	PAVEMENT TYPE	8-IN. CONC. ENT. PAVE. (SQ. YD.)
LT.	21+84	9.8	4.7	CONCRETE	25.6

DRAINAGE CONSTRUCTION CHART						
NO.	ID	STATION	DESCRIPTION	TYPE	INLET	INVERT
36	IN135	RT. 21+20.04	CURB BOX INLET TYPE A	ON-GRADE	G.L. 976.95	970.96
37	IN134	RT. 22+09.00	CURB BOX INLET TYPE A	ON-GRADE	G.L. 976.06	971.47
38	IN133	LT. 22+07.92	CURB BOX INLET TYPE A	ON-GRADE	G.L. 976.07	971.66

RT. STA. 20+26 (TO POND) CONST. 8.3 TONS OF CHANNEL LINING CLASS III AT THE OUTLET OF THE PIPE

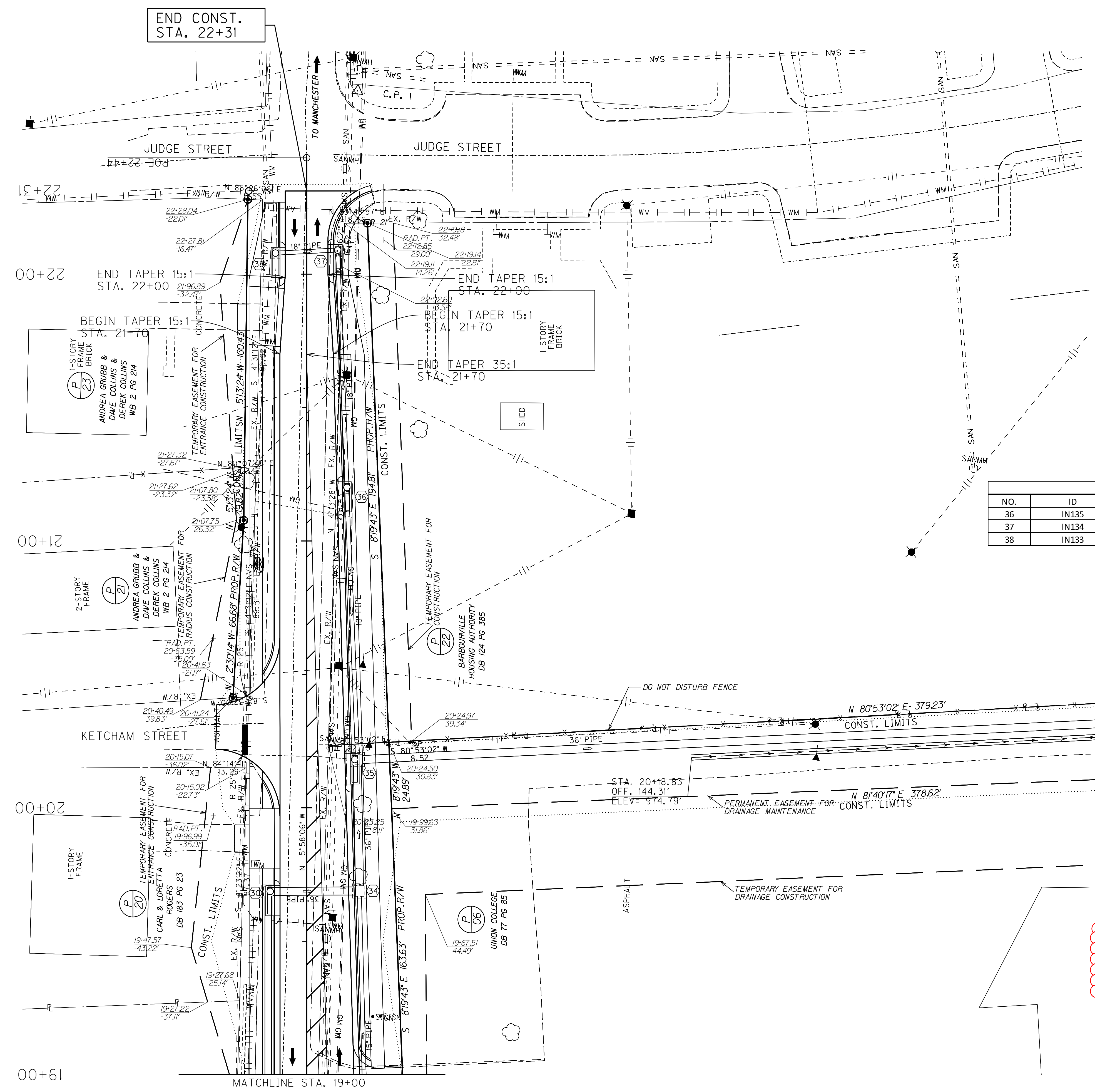
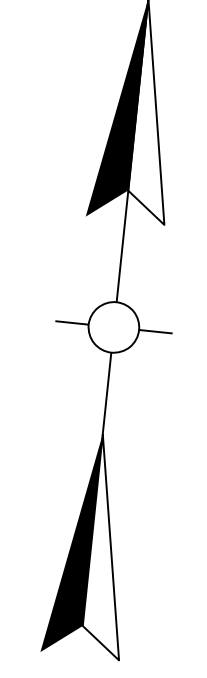
RT. STA. 20+19 TO STA. 20+26 (TO POND) CONST. SPECIAL 2 FT. F.B. DITCH WITH 4:1 SIDE SLOPES WITH AND CONST. 19.1 TONS OF CHANNEL LINING CLASS III



SCALE: 1"=20'

KY 1487 MANCHESTER STREET
MAINLINE PLAN SHEET
STA. 19+00 TO STA. 22+31

FILE NAME: C:\PWORK\VERIKA_HUBBARD\112383\1\RO1000PL.DGN
USER: erika.smith
DATE PLOTTED: October 5, 2015
E-SHEET NAME:
MicroStation v8.11.7.443



LT. OR RT.	STATION - STATION	SQ. YD.	RAMP TYPE #1	RAMP TYPE #4	DETECTABLE WARNING (SQ. FT.)	SOD (SQ. YD.)
LT.	21+00 22+27.0	70.2	1	----	10	31.1
RT.	21+00 22+30.7	78	----	1	10	27.8

LT. OR RT.	STATION - STATION	L.F.*
LT.	21+00 22+27.0	93.9
RT.	21+00 22+31.3	115.5

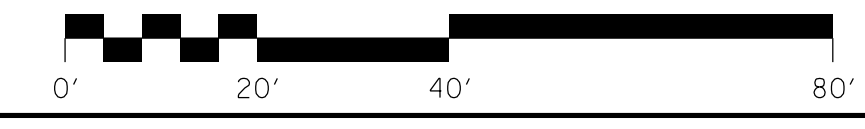
*NOTE: EXCLUDES CURB BOX INLETS AND ENTRANCES

LT. OR RT.	STA.	WIDTH (FT.)	AREA (SQ. YD.)	PAVEMENT TYPE	8-IN. CONC. ENT. PAVE. (SQ. YD.)
LT.	21+84	9.8	4.7	CONCRETE	25.6

NO.	ID	STATION	DESCRIPTION	TYPE	INLET	INVERT
36	IN135	RT. 21+20.04	CURB BOX INLET TYPE A	ON-GRADE	G.L. 976.95	970.96
37	IN134	RT. 22+09.00	CURB BOX INLET TYPE A	ON-GRADE	G.L. 976.06	971.47
38	IN133	LT. 22+07.92	CURB BOX INLET TYPE A	ON-GRADE	G.L. 976.07	971.66

RT. STA. 20+26 (TO POND) CONST. 8.3 TONS OF CHANNEL LINING CLASS III AT THE OUTLET OF THE PIPE

RT. STA. 20+19 TO STA. 20+26 (TO POND) CONST. SPECIAL 2 FT. F.B. DITCH WITH 4:1 SIDE SLOPES WITH AND CONST. 19.1 TONS OF CHANNEL LINING CLASS III



SCALE: 1"=20'
KY 1487 MANCHESTER STREET
MAINLINE PLAN SHEET
STA. 19+00 TO STA. 22+31

FILE NAME: C:\PWORK\VERIKA_HUBBARD\112383\1\RO1000PL.DGN
USER: erika.smith
DATE PLOTTED: October 5, 2015
E-SHEET NAME:
MicroStation v8.11.7.443

PIPE DRAINAGE SHEET 11 OF 12

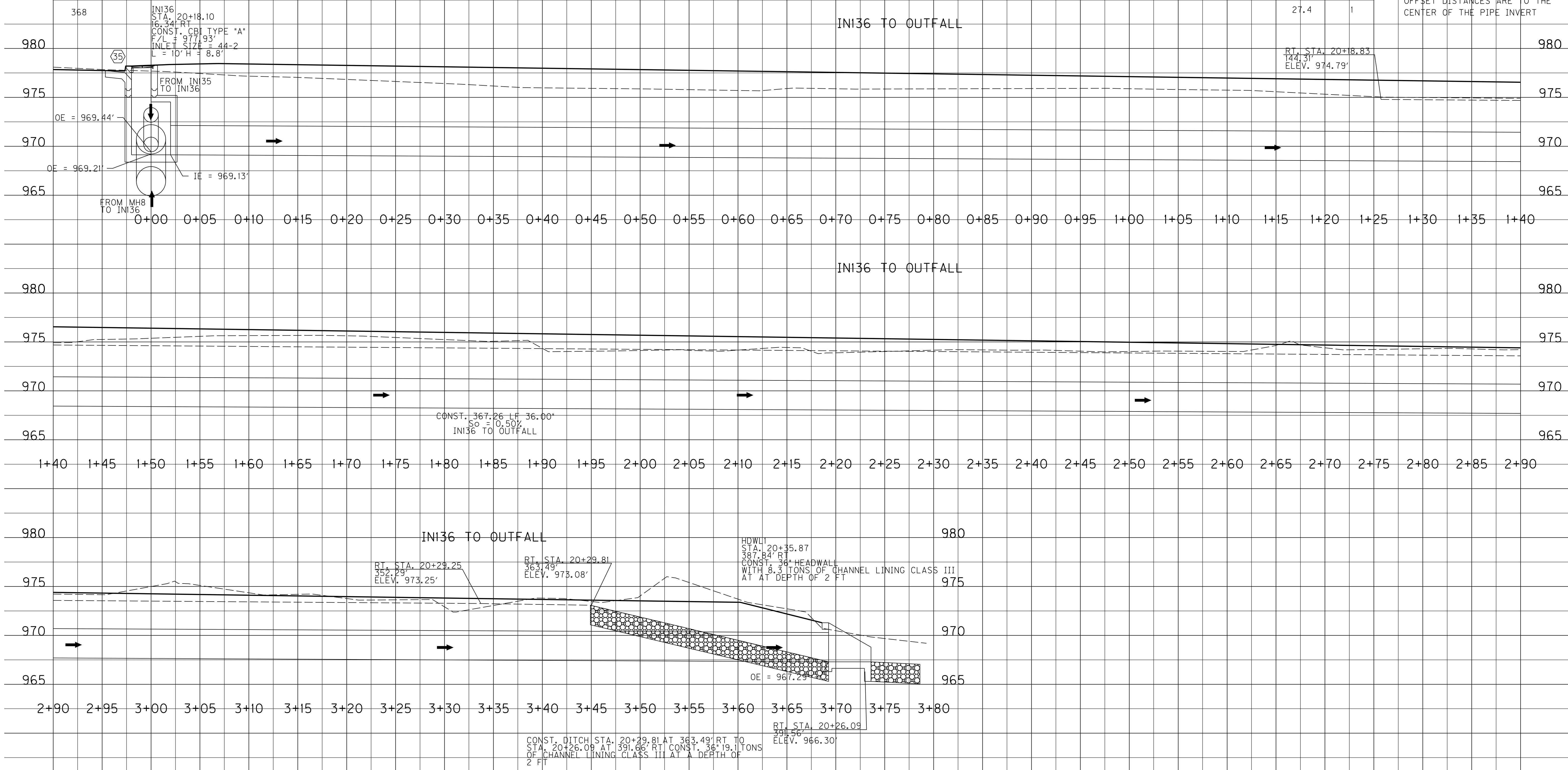
COUNTY OF	ITEM NO.	SHEET NO.
KNOX	11-3004.00	R37

STORM SEWER PIPE

L I N E A R F E E T

CHANNEL LINING CLASS III	PIPE CULVERT HEADWALL - 36IN
TON	EACH
27.4	1

- GENERAL NOTES:
- FOR INLETS AND MANHOLES, STATION AND OFFSET DISTANCES ARE TO THE CENTER OF THE PIPE CHAMBER
 - FOR HEADWALLS, STATION AND OFFSET DISTANCES ARE TO THE CENTER OF THE PIPE INVERT



SCALE: 1" = 5'

PIPE DRAINAGE SHEET
KY 1487 MANCHESTER STREET WIDENING
STORM SEWER PROFILE-MAINLINE

FILE NAME: C:\PWORK\ERIK.A.HUBBARD\0670309\PIPE SHEETS.DGN
 USER: erika.smith
 DATE PLOTTED: August 11, 2015
 MicroStation v8.11.7.443 E-SHEET NAME:

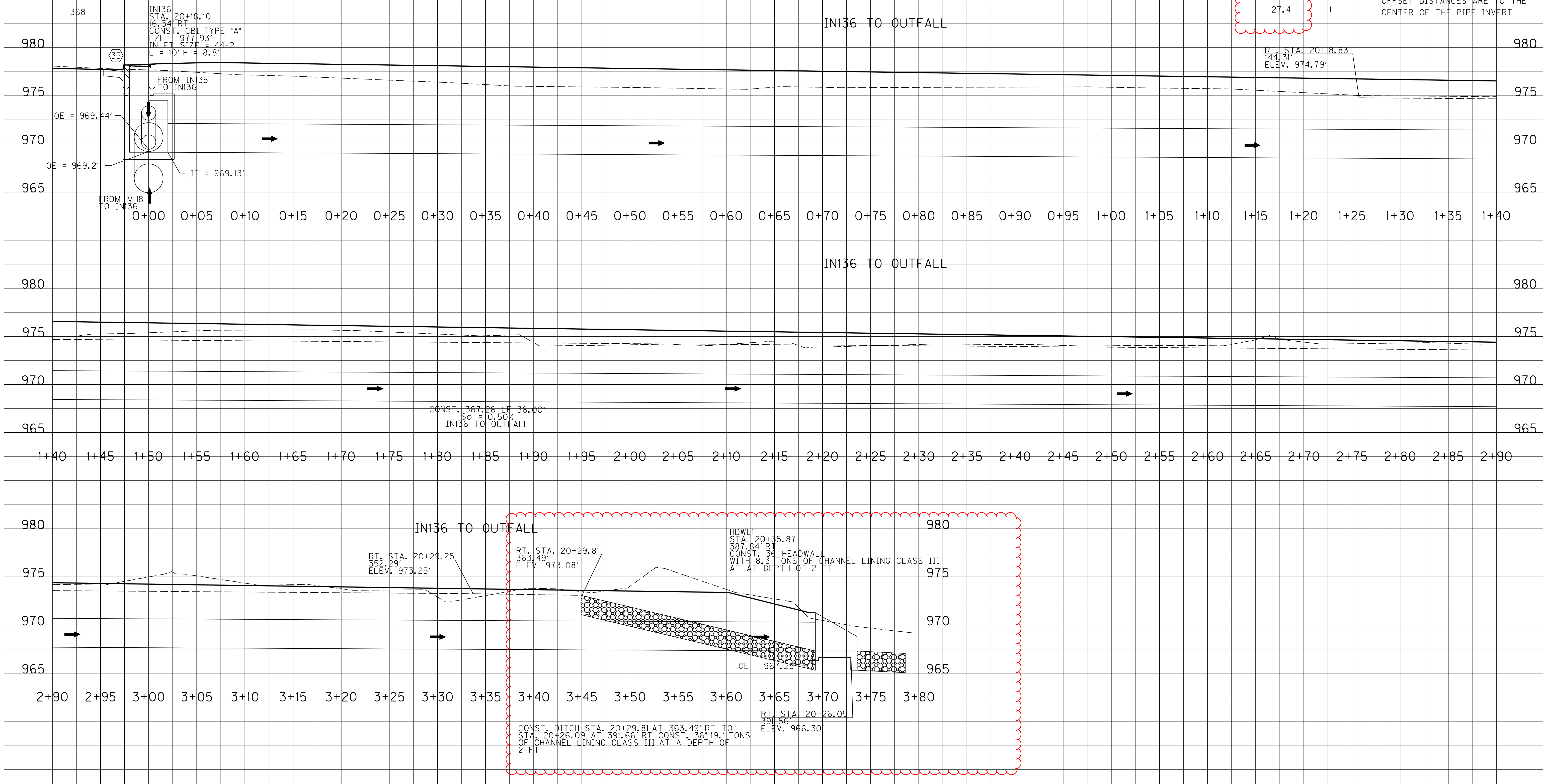
COUNTY OF	ITEM NO.	SHEET NO.
KNOX	11-3004.00	R37

STORM SEWER PIPE

36" LINEAR FEET

CHANNEL LINING CLASS III	PIPE CULVERT HEADWALL - 36IN
TON	EACH
27.4	1

- GENERAL NOTES:
- FOR INLETS AND MANHOLES, STATION AND OFFSET DISTANCES ARE TO THE CENTER OF THE PIPE CHAMBER
 - FOR HEADWALLS, STATION AND OFFSET DISTANCES ARE TO THE CENTER OF THE PIPE INVERT



SCALE: 1" = 5'

FILE NAME: C:\PWORK\ERIK.A.HUBBARD\0670309\PIPE SHEETS.DGN
USER: erika.smith
DATE PLOTTED: August 11, 2015
MicroStation v8.11.7.443 E-SHEET NAME:

PROPOSAL BID ITEMS

REVISED ADDENDUM #3: 11-17-15

151280

Page 1 of 4

Report Date 11/17/15

Section: 0001 - PAVING

LINE	BID CODE	ALT	DESCRIPTION	QUANTITY	UNIT	UNIT PRIC	FP	AMOUNT
0010	00003		CRUSHED STONE BASE	3,654.00	TON		\$	
0020	00020		TRAFFIC BOUND BASE	200.00	TON		\$	
0030	00078		CRUSHED AGGREGATE SIZE NO 2	6,997.00	TON		\$	
0040	00212		CL2 ASPH BASE 1.00D PG64-22	3,268.00	TON		\$	
0050	00301		CL2 ASPH SURF 0.38D PG64-22	927.00	TON		\$	
0060	02101		CEM CONC ENT PAVEMENT-8 IN	359.00	SQYD		\$	

Section: 0002 - ROADWAY

LINE	BID CODE	ALT	DESCRIPTION	QUANTITY	UNIT	UNIT PRIC	FP	AMOUNT
0070	01005		PERFORATED PIPE EDGE DRAIN-4 IN	3,574.00	LF		\$	
0080	01010		NON-PERFORATED PIPE-4 IN	35.00	LF		\$	
0090	01015		INSPECT & CERTIFY EDGE DRAIN SYSTEM	1.00	LS		\$	
0100	01740		CORED HOLE DRAINAGE BOX CON-4 IN	34.00	EACH		\$	
0110	01741		CORED HOLE DRAINAGE BOX CON-6 IN	1.00	EACH		\$	
0120	01810		STANDARD CURB AND GUTTER	3,106.10	LF		\$	
0130	01890		ISLAND HEADER CURB TYPE 1	1,076.00	LF		\$	
0140	01891		ISLAND HEADER CURB TYPE 2	92.00	LF		\$	
0150	02014		BARRICADE-TYPE III	12.00	EACH		\$	
0160	02200		ROADWAY EXCAVATION	2,356.00	CUYD		\$	
0170	02242		WATER (FOR DUST CONTROL)	20.00	MGAL		\$	
0180	02429		RIGHT-OF-WAY MONUMENT TYPE 1	11.00	EACH		\$	
0190	02430		RIGHT-OF-WAY MONUMENT TYPE 1A	3.00	EACH		\$	
0200	02432		WITNESS POST	14.00	EACH		\$	
0210	02545		CLEARING AND GRUBBING (APPROXIMATELY 2.34 ACRES))	1.00	LS		\$	
0220	02562		TEMPORARY SIGNS	433.00	SQFT		\$	
0230	02585		EDGE KEY	105.00	LF		\$	
0240	02650		MAINTAIN & CONTROL TRAFFIC	1.00	LS		\$	
0250	02676		MOBILIZATION FOR MILL & TEXT	1.00	LS		\$	
0260	02677		ASPHALT PAVE MILLING & TEXTURING	2,970.00	TON		\$	
0270	02701		TEMP SILT FENCE	1,919.00	LF		\$	
0280	02703		SILT TRAP TYPE A	2.00	EACH		\$	
0290	02704		SILT TRAP TYPE B	2.00	EACH		\$	
0300	02705		SILT TRAP TYPE C	2.00	EACH		\$	
0310	02706		CLEAN SILT TRAP TYPE A	2.00	EACH		\$	
0320	02707		CLEAN SILT TRAP TYPE B	2.00	EACH		\$	
0330	02708		CLEAN SILT TRAP TYPE C	2.00	EACH		\$	
0340	02720		SIDEWALK-4 IN CONCRETE	2,068.00	SQYD		\$	
0350	02726		STAKING	1.00	LS		\$	
0360	05950		EROSION CONTROL BLANKET	1,040.00	SQYD		\$	
0370	05952		TEMP MULCH	6,700.00	SQYD		\$	
0380	05963		INITIAL FERTILIZER	.60	TON		\$	
0390	05964		20-10-10 FERTILIZER	.60	TON		\$	
0400	05985		SEEDING AND PROTECTION	874.00	SQYD		\$	
0410	05990		SODDING	5,132.00	SQYD		\$	

PROPOSAL BID ITEMS

REVISED ADDENDUM #3: 11-17-15

151280

Page 2 of 4

Report Date 11/17/15

LINE	BID CODE	ALT	DESCRIPTION	QUANTITY	UNIT	UNIT PRIC	FP	AMOUNT
0420	05992		AGRICULTURAL LIMESTONE	7.00	TON		\$	
0430	06510		PAVE STRIPING-TEMP PAINT-4 IN	12,500.00	LF		\$	
0440	06514		PAVE STRIPING-PERM PAINT-4 IN	3,097.00	LF		\$	
0450	06515		PAVE STRIPING-PERM PAINT-6 IN	6,050.00	LF		\$	
0460	06566		PAVE MARKING-THERMO X-WALK-12 IN	297.00	LF		\$	
0470	06568		PAVE MARKING-THERMO STOP BAR-24IN	151.00	LF		\$	
0480	06569		PAVE MARKING-THERMO CROSS-HATCH	2,551.00	SQFT		\$	
0490	06570		PAVE MARKING-PAINT CROSS-HATCH	654.00	SQFT		\$	
0500	06574		PAVE MARKING-THERMO CURV ARROW	29.00	EACH		\$	
0510	20206EC		PAVE MARK HANDICAP SYMBOL	5.00	EACH		\$	
0520	23055N		REMOVE (2-STORY BRICK BUILDING STA. 3+50 RT. 41.00')	1.00	LS		\$	
0530	23055N		REMOVE (2-STORY BLOCK BUILDING STA. 4+00 RT. 41.00')	1.00	LS		\$	
0540	23055N		REMOVE (2-STORY BLOCK BUILDING STA. 4+00 RT. 68.00')	1.00	LS		\$	
0550	23119EN		PEDESTRIAN SAFETY FENCE	36.00	LF		\$	
0560	23158ES505		DETECTABLE WARNINGS	270.00	SQFT		\$	
0570	24814EC		PIPELINE INSPECTION	4,030.00	LF		\$	

Section: 0003 - DRAINAGE - STORM SEWER

LINE	BID CODE	ALT	DESCRIPTION	QUANTITY	UNIT	UNIT PRIC	FP	AMOUNT
0580	00521		STORM SEWER PIPE-15 IN	960.00	LF		\$	
0590	00522		STORM SEWER PIPE-18 IN	897.00	LF		\$	
0600	00524		STORM SEWER PIPE-24 IN	1,139.00	LF		\$	
0610	00525		STORM SEWER PIPE-27 IN	260.00	LF		\$	
0620	00526		STORM SEWER PIPE-30 IN	331.00	LF		\$	
0630	00528		STORM SEWER PIPE-36 IN	443.00	LF		\$	
0640	01011		NON-PERFORATED PIPE-6 IN	26.50	LF		\$	
0650	01212		PIPE CULVERT HEADWALL-36 IN	1.00	EACH		\$	
0660	01456		CURB BOX INLET TYPE A	35.00	EACH		\$	
0670	01559		DROP BOX INLET TYPE 13G	1.00	EACH		\$	
0680	01577		DROP BOX INLET TYPE 14	10.00	EACH		\$	
0690	01643		JUNCTION BOX-24 IN	4.00	EACH		\$	
0700	01644		JUNCTION BOX-30 IN	1.00	EACH		\$	
0710	01645		JUNCTION BOX-36 IN	1.00	EACH		\$	
0720	01647		JUNCTION BOX-48 IN	1.00	EACH		\$	
0730	02484		CHANNEL LINING CLASS III (REVISED: 11-17-15)	27.40	TON		\$	
0740	03385		PVC PIPE-6 IN	25.00	LF		\$	

Section: 0004 - SEWER

LINE	BID CODE	ALT	DESCRIPTION	QUANTITY	UNIT	UNIT PRIC	FP	AMOUNT
0750	15023		S ENCASMENT STEEL OPEN CUT RANGE 4 (16-IN)	120.00	LF		\$	

PROPOSAL BID ITEMS

REVISED ADDENDUM #3: 11-17-15

151280

Page 3 of 4

Report Date 11/17/15

LINE	BID CODE	ALT	DESCRIPTION	QUANTITY	UNIT	UNIT PRIC	FP	AMOUNT
0760	15060		S FORCE MAIN PVC 06 INCH	263.00	LF		\$	
0770	15074		S FORCE MAIN TIE-IN 06 INCH	2.00	EACH		\$	
0780	15092		S MANHOLE	12.00	EACH		\$	
0790	15093		S MANHOLE ABANDON/REMOVE	11.00	EACH		\$	
0800	15101		S MANHOLE WITH DROP (OUTSIDE)	1.00	EACH		\$	
0810	15112		S PIPE PVC 08 INCH (PVC GRAVITY SEWER)	1,451.00	LF		\$	
0820	15566		S LATERAL LONG SIDE 06 INCH INST	12.00	EACH		\$	
0830	15568		S LATERAL SHORT SIDE 06 INCH INST	14.00	EACH		\$	
0840	24518EC		CAP AND ABANDON (PLUG 8-IN SEWER LINE)	27.00	EACH		\$	
0850	24518EC		CAP AND ABANDON (PLUG 6-IN FORCE MAIN)	2.00	EACH		\$	

Section: 0005 - LIGHTING

LINE	BID CODE	ALT	DESCRIPTION	QUANTITY	UNIT	UNIT PRIC	FP	AMOUNT
0860	03381		PVC PIPE-2 IN	3,117.00	LF		\$	
0870	04701		POLE 40 FT MTG HT	8.00	EACH		\$	
0880	04720		BRACKET 4 FT	7.00	EACH		\$	
0890	04725		BRACKET 15 FT	1.00	EACH		\$	
0900	04740		POLE BASE	24.00	EACH		\$	
0910	04750		TRANSFORMER BASE	8.00	EACH		\$	
0920	04760		POLE W/SECONDARY CONTROL EQUIP	1.00	EACH		\$	
0930	04780		FUSED CONNECTOR KIT	16.00	EACH		\$	
0940	04820		TRENCHING AND BACKFILLING	3,117.00	LF		\$	
0970	04940		REMOVE LIGHTING	1.00	LS		\$	
0980	20391NS835		ELECTRICAL JUNCTION BOX TYPE A	13.00	EACH		\$	
0990	21543EN		BORE AND JACK CONDUIT	428.00	LF		\$	

Section: 0006 - WATERLINE

LINE	BID CODE	ALT	DESCRIPTION	QUANTITY	UNIT	UNIT PRIC	FP	AMOUNT
1010	14003		W CAP EXISTING MAIN (& ABANDON)	10.00	EACH		\$	
1020	14014		W ENCASEMENT STEEL OPEN CUT RANGE 3 (12-IN)	145.00	LF		\$	
1030	14019		W FIRE HYDRANT ASSEMBLY	1.00	EACH		\$	
1040	14021		W FIRE HYDRANT REMOVE (EXISTING)	1.00	EACH		\$	
1050	14028		W METER 3/4 INCH (CONSTRUCT WATER SERVICE SETTING)	21.00	EACH		\$	
1060	14056		W PIPE PVC 02 INCH	10.00	LF		\$	
1070	14059		W PIPE PVC 06 INCH	2,329.00	LF		\$	
1080	14060		W PIPE PVC 08 INCH	211.00	LF		\$	
1090	14089		W TAPPING SLEEVE AND VALVE SIZE 1 (TIE TO EXISTING 8-IN WET TAP)	1.00	EACH		\$	
1100	14091		W TIE-IN 02 INCH (EXISTING, DRY TIE)	9.00	EACH		\$	

PROPOSAL BID ITEMS

151280

Page 4 of 4

Report Date 11/17/15

LINE	BID CODE	ALT	DESCRIPTION	QUANTITY	UNIT	UNIT PRIC	FP	AMOUNT
1110	14094		W TIE-IN 06 INCH (EXISTING, DRY TIE)	9.00	EACH		\$	
1120	14102		W VALVE 02 INCH	1.00	EACH		\$	
1130	14105		W VALVE 06 INCH	11.00	EACH		\$	
1140	21346ND		WATER SERVICE RECONNECT-3/4 IN-1 IN	21.00	EACH		\$	
1150	24030EC		REMOVE VALVE (EXISTING GATE VALVE)	12.00	EACH		\$	

Section: 0007 - DEMOBILIZATION &/OR MOBILIZATION

LINE	BID CODE	ALT	DESCRIPTION	QUANTITY	UNIT	UNIT PRIC	FP	AMOUNT
1160	02568		MOBILIZATION	1.00	LS		\$	
1170	02569		DEMOBILIZATION	1.00	LS		\$	